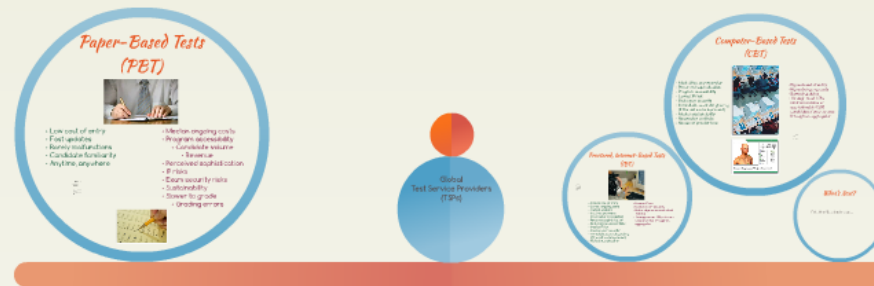


Exam Delivery Methods: Paper, Online, 'or' Computer-Based

JDM Rozsa, CAE, ACA

jdmrozsa@metacred.com



Values & Goals

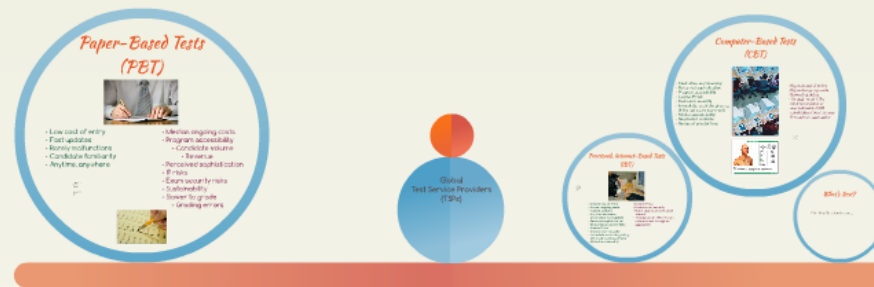
Advance mission
Increase impact
Harmonize practices
Protect patients
Raise standard of care
Financial sustainability
Lead the specialty

European Union of Medical Specialists (UEMS) Council for European Specialists Medical Assessment (CESMA)
Winter 2016 Conference - Brussels, Belgium

Exam Delivery Methods: Paper, Online, 'or' Computer-Based

JDM Rozsa, CAE, ACA

jdmroza@metacred.com



Values & Goals

Advance mission
Increase impact
Harmonize practices
Protect patients
Raise standard of care
Financial sustainability
Lead the specialty

European Union of Medical Specialists (UEMS) Council for European Specialists Medical Assessment (CESMA)
Winter 2016 Conference - Brussels, Belgium

Values & Goals

Advance mission

Increase impact

Harmonize practices

Protect patients

Raise standard of care

Financial sustainability

Lead the specialty

Paper-Based Tests (PBT)



- Low cost of entry
- Fast updates
- Rarely malfunctions
- Candidate familiarity
- Anytime, anywhere

- Median ongoing costs
 - Program accessibility
 - Candidate volume
 - Revenue
- Perceived sophistication
- IP risks
- Exam security risks
- Sustainability
- Slower to grade
 - Grading errors

© 2015 Pearson Education, Inc. All rights reserved. Printed in the United States of America. This publication is protected by copyright. Any unauthorized distribution or reproduction of this work is prohibited. For more information, contact Pearson Education, Inc., 501 Boylston Street, Boston, MA 02116.



PBT DIRECT COSTS

- Incremental
 - Printing & binding
 - Answer sheets
 - Pencils (& calculators?)

- Fixed
 - Grading software (1-time)
 - Shipping
 - Proctor travel (& time?)
 - Meeting space
 - F&B

Proctored, Internet-Based Tests (IBT)



- Median cost of entry
 - Lowest ongoing costs
 - Fastest updates
 - Anytime, anywhere
(if a proctor is available)
 - Perceived sophistication
 - Best program accessibility
 - Median IP risk
 - Median exam security
 - Immediate, accurate grading
(if the cut score is pre-set)
 - Highest sustainability
- Median IP risk
 - Median exam security
 - Potential proctor conflicts of interest
 - Through some TSPs, minimum volume unless through an aggregator

PROCTORED IBT DIRECT COSTS

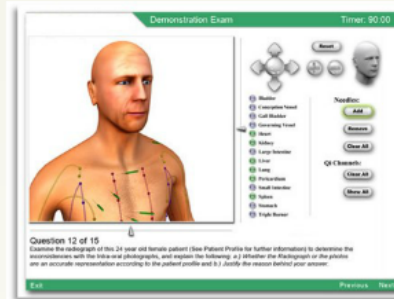
- Incremental
 - Candidate delivery fee
(less through an aggregator)
- Fixed
 - Publication of each exam form
 - Hosted
 - Proctor travel (& time?)
 - Meeting space
 - F&B
 - Local
 - F&B

Computer-Based Tests (CBT)

- Most cities, any weekday
- Perceived sophistication
- Program accessibility
- Lowest IP risk
- Best exam security
- Immediate, accurate grading (if the cut score is pre-set)
- Median sustainability
- No proctor conflicts
- No use of proctor time



- Highest cost of entry
- Highest ongoing costs
- Slowest updates
- Through most TSPs, minimum volume of approximately 1,500 candidates / year, unless through an aggregator



et-Based Tests
(T)

What's Next?



Global Test Service Providers (TSPs)

CBT DIRECT COSTS

- Incremental
 - Candidate delivery fee
(less through an aggregator--and no minimum volume)
- Fixed
 - Publication of each exam form

What's Next?

Only the Shadow knows...

Values & Goals

Advance mission

Increase impact

Harmonize practices

Protect patients

Raise standard of care

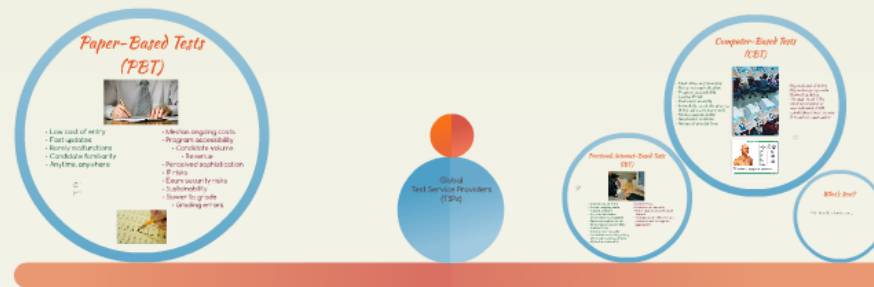
Financial sustainability

Lead the specialty

Exam Delivery Methods: Paper, Online, 'or' Computer-Based

JDM Rozsa, CAE, ACA

jdmroza@metacred.com



Values & Goals

Advance mission
Increase impact
Harmonize practices
Protect patients
Raise standard of care
Financial sustainability
Lead the specialty

European Union of Medical Specialists (UEMS) Council for European Specialists Medical Assessment (CESMA)
Winter 2016 Conference - Brussels, Belgium